



# TAVA

R E S O R T



[www.tavaresort.com](http://www.tavaresort.com)  
3220 S Retreat Drive Hurricane, UT 84737  
208.890.5325 | 435.265.8282

## PHASES ONE AND TWO AVAILABLE NOW

TAVA is Southern Utah's newest residential resort with spectacular amenities available exclusively to our homeowners, and with amazing weather to be enjoyed year round, there is something for everyone in your family.

This new luxurious community offers two stunning model homes, the Tavacci and the Lamosa, so you can see the expert design and quality for yourself.

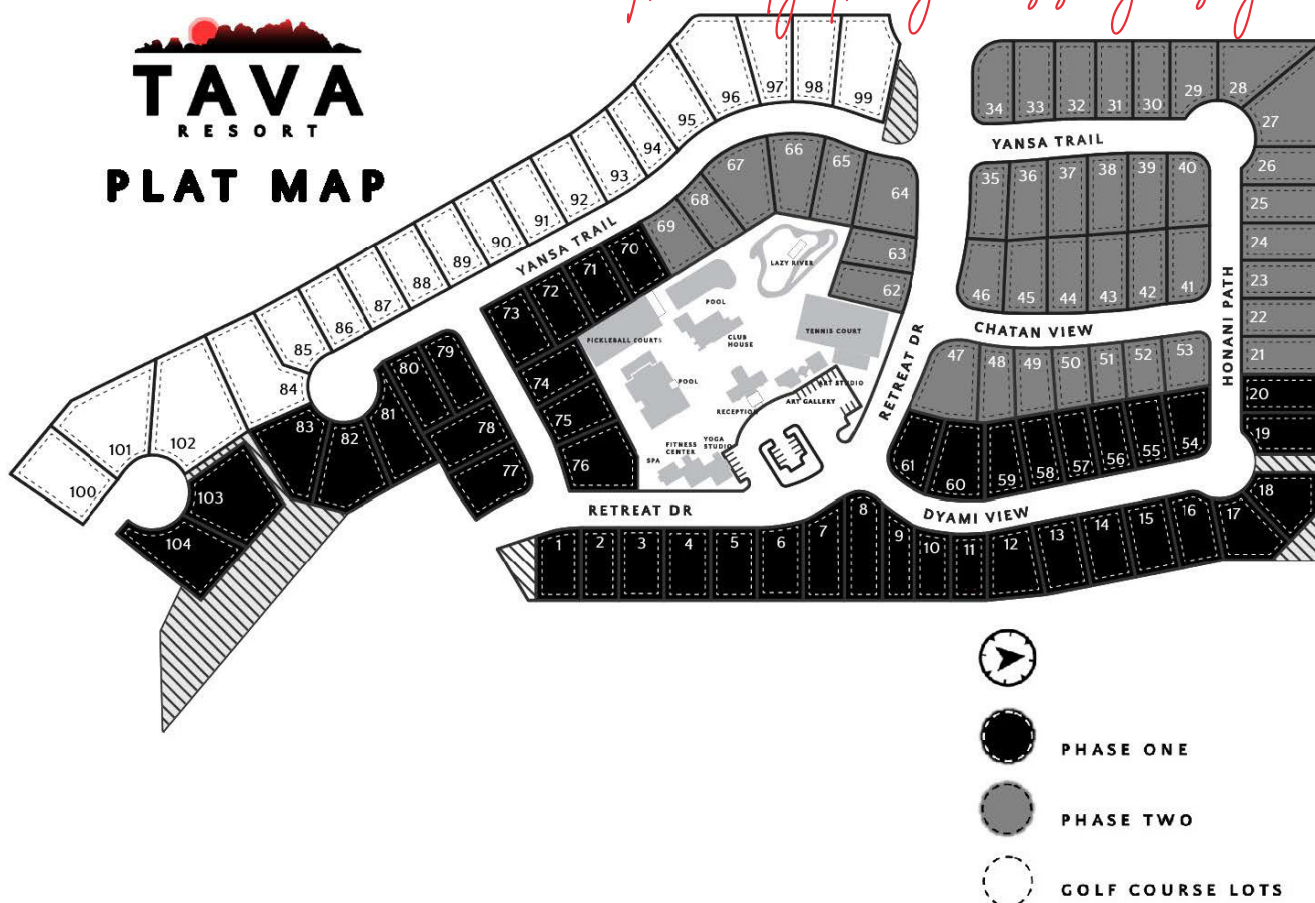
Additionally, we expect to have multiple spec homes completed by the fall of 2022 that will be ready for you and your family to move right in!

If you would rather build and select your own home finishes, we have a total of 104 home sites with seven amazing floor plans to choose from. Each plan ranges from three to six bedrooms, with views from the upper level that go on for miles! TAVA is the only development in Sand Hollow to build two-story homes. You will love how spacious our homes are!

If action and adventure is what you are looking for, TAVA Resort is located near several national parks, sand dunes, award-winning golf courses (some with Sand Hollow resident discounts), hiking trails, and reservoirs available year round!

If luxury living in an exclusive homeowner community is what you are looking for (with no nightly or long-term rentals allowed), TAVA Resort is the place for you and your family to build lifelong memories!

*The only thing missing is you!*





# SETTING HIGH STANDARDS

## INTERIOR FEATURES

- Solid Surface Countertops w/ 4" Backsplashes
- 5" MDF Baseboard
- Luxury Vinyl Plank Flooring on Main Level
- Master Closet Shelving
- 84" Ceiling Fan in Great Room
- 60" Linear Electric Fireplace
- 12x8 Sliding Rear Patio Door
- Two Tone Paint Selections
- Rounded Wall Corners
- 8' Paint Grade Interior Doors
- Laundry Room Stainless Sink w/ Moen Pull Down Faucet
- Custom Iron and Glass Front Door
- 9' Ceilings
- Finished & Painted Garage Walls

## KITCHEN FEATURES

- Frigidare – Large Refrigerator/Freezer
- Kitchenaid
  - 36" Gas Range Cooktop
  - Built-In Microwave / Oven Combo
  - Dishwasher
- 60/40 Composite Undermount Sink w/ Moen Pull Down Sprayer Faucet
- Wood Hood
- Under Cabinet Lighting
- Soft Close Cabinets
- Garbage Pull Outs
- Counter Height Kitchen Island
- Walk-In Pantry

## BATHROOM FEATURES

- Tile Showers & Tubs
- Shower Niches
- Over Mirror Lighting
- Walk-In Shower w/ Euro Door in Master
- Free Standing Tub in Master
- Cast Iron Tub in Guest Bathrooms
- Porcelain Undermount Sinks
- Tall Toilets with Soft Close Seat Covers
- Moen Single Lever Fixtures

## EXTERIOR FEATURES

- Natural Stone
- Full Landscaping
- Upper Back Deck w/ Railing (per plan)
- Covered Concrete Patio (per plan)
- 8' Entry Doors
- Custom Address Identification Fixture
- Custom Copper Exterior Sconces
- Concrete Finish Driveway, Patio, Walkways
- Garage Door Key Pad
- Cold Bib in Garage
- Front & Back Hose Bibs
- BBQ Bib
- Patio Privacy Divider

## ENERGY EFFICIENT

- Energy Star Efficient Appliances
- Programmable Thermostat
- Tankless On-Demand Water Heater
- Vinyl Low-E Windows
- Double Panel Glass Windows
- Insulated Garage & Garage Doors
- R19/R38 Insulation
- Soft Water (Loop Rough-In)
- Reverse Osmosis H2O (Rough-In)
- Central Vacuum (Rough-In)

## AMENITIES\*

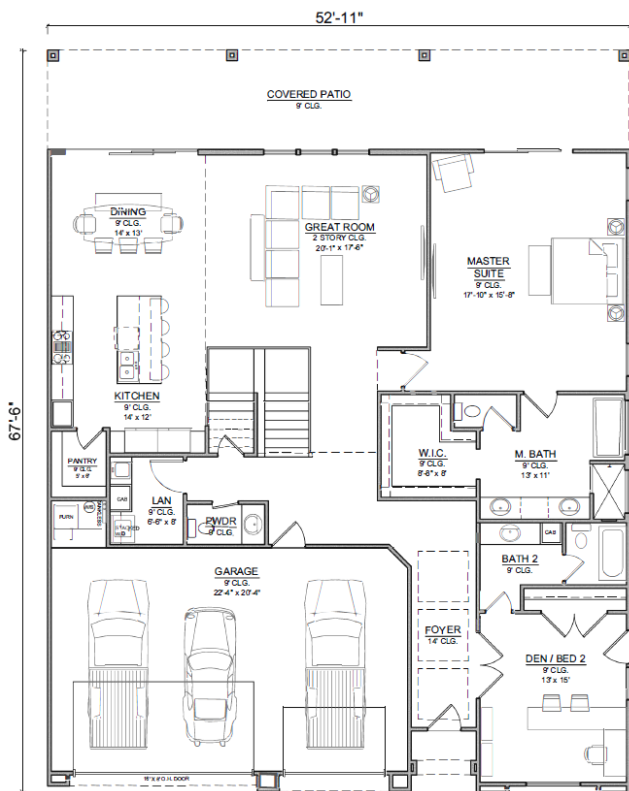
- 2 Luxury Pools
- 2 Hot Tubs
- Lazy River
- Splash Pad
- Fitness Center
- Sauna
- Beautiful Clubhouse
- 4 Pickleball Courts
- Tennis Court
- Indoor Racquetball Court
- Basketball Court
- Outdoor Fire Pits
- Observation Decks

*\*Amenities available exclusively to TAVA homeowners.*

# TAVACCI

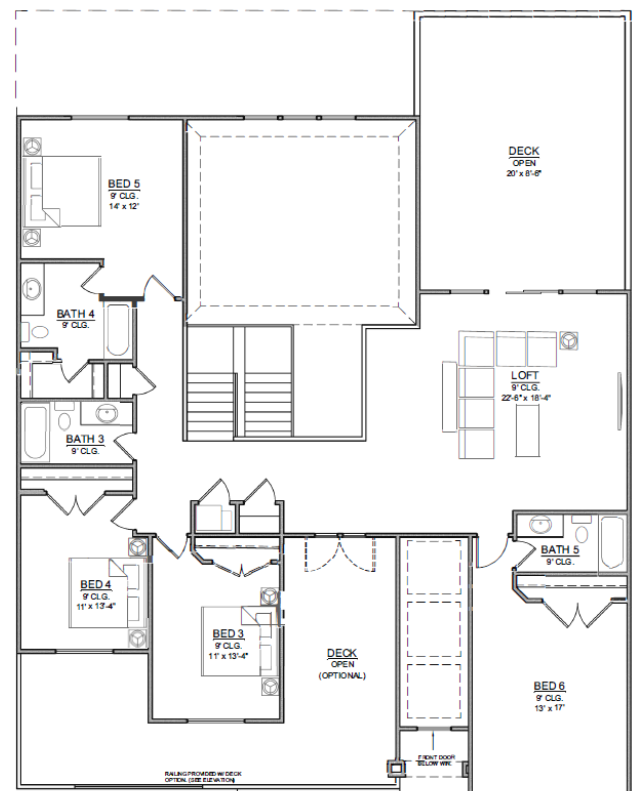


6 Bedroom | 5.5 Bathroom | 2 or 3 Car Garage | 3,900 - 4,200 Sq. Ft.



FLOOR PLAN

2,308 SQ. FT.



UPPER FLOOR PLAN

1,753 SQ. FT.



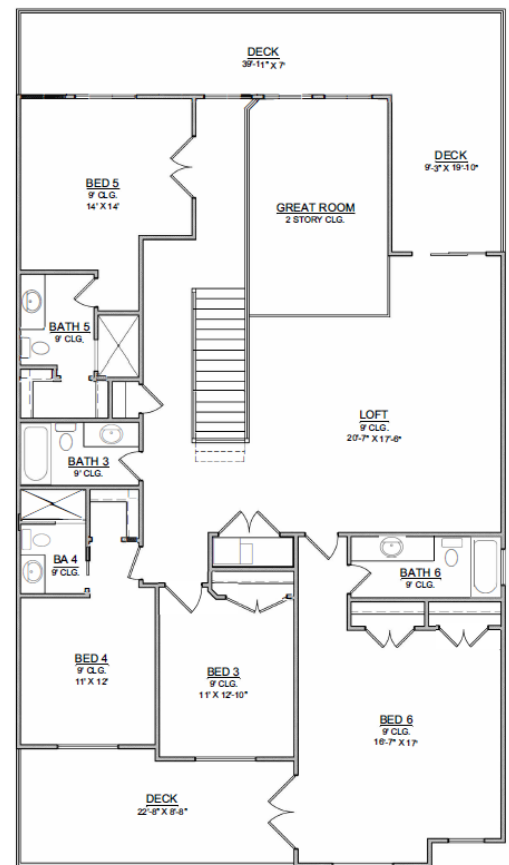
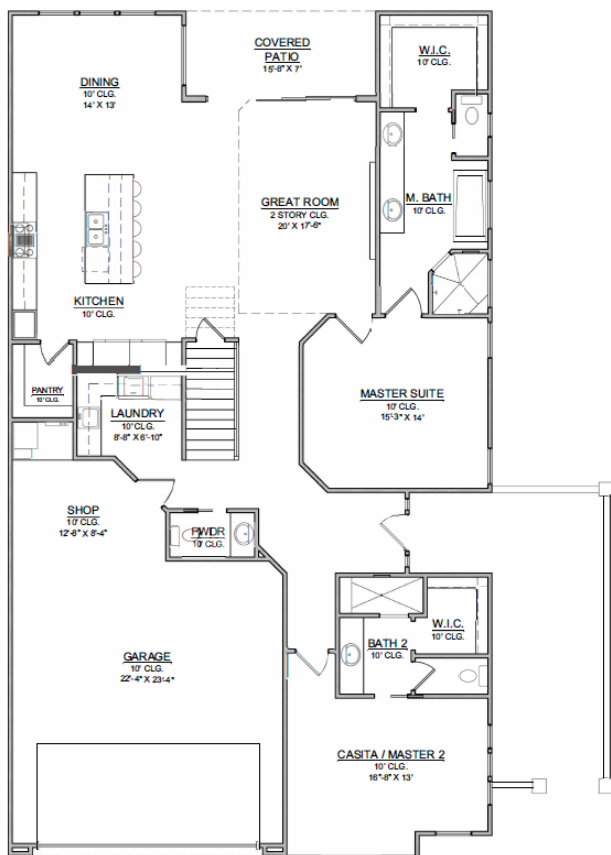




# LAMOSA

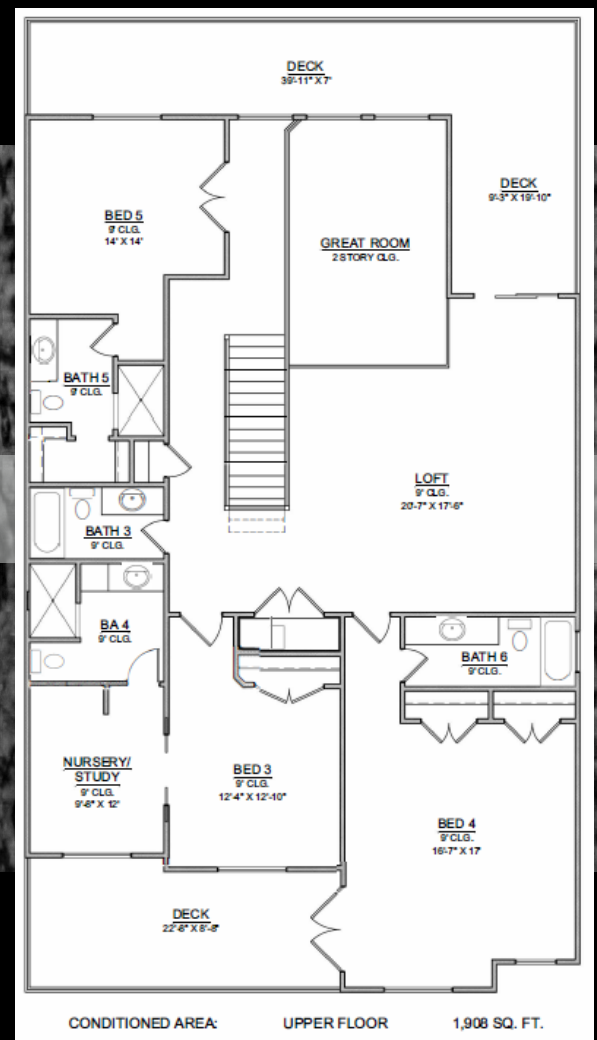


6 Bedroom | 6.5 Bathroom | 2 Car Extended Garage | 3,900 Sq. Ft.

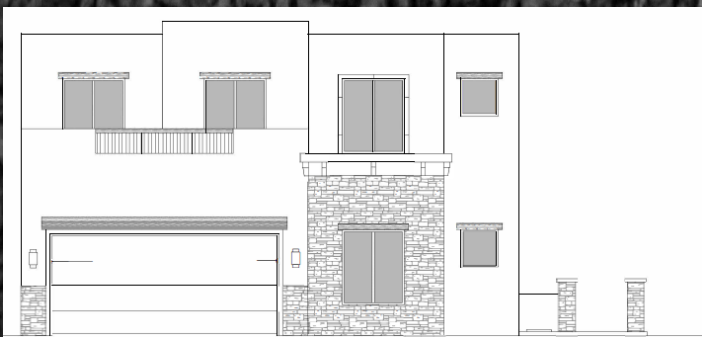




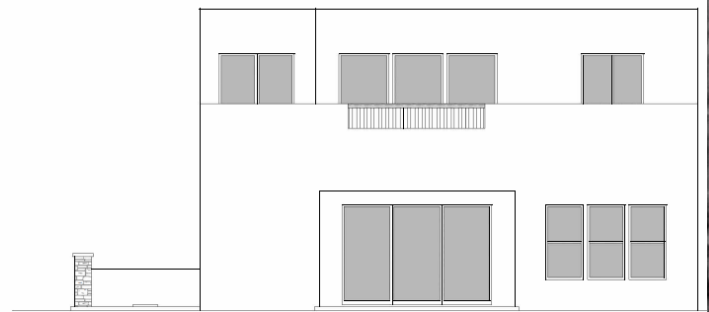
## LAMOSA - 5 Bedroom + Den Option



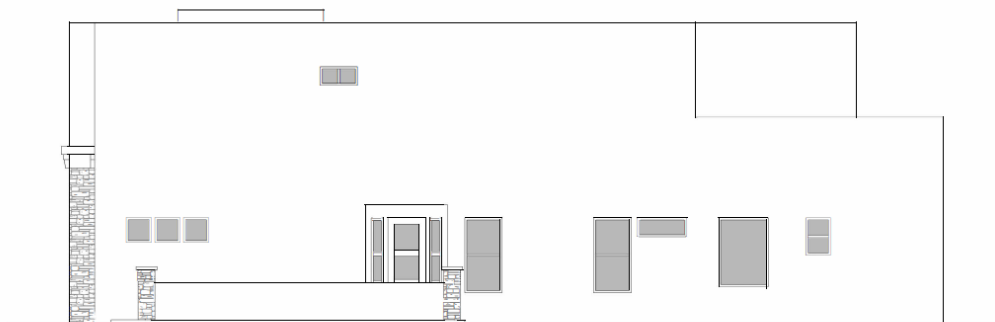
[WWW.TAVARESORT.COM](http://WWW.TAVARESORT.COM)



FRONT ELEVATION



REAR ELEVATION



RIGHT SIDE ELEVATION





*Where Luxury Living Meets the Sun*



Diana Black Realtor®  
djblack22@gmail.com  
208.890.5325 | 435.265.8282

